



Partners in Building Solutions



ANNOUNCEMENT

Construction Systems Inc. is pleased to announce that 9 of our employees, including 3 project managers have been certified by 3M in application and installation of 3M Commercial Fire Protection Products.

This certification further extends our self-performing abilities that allow us to service our clients in a seamless professional manner.

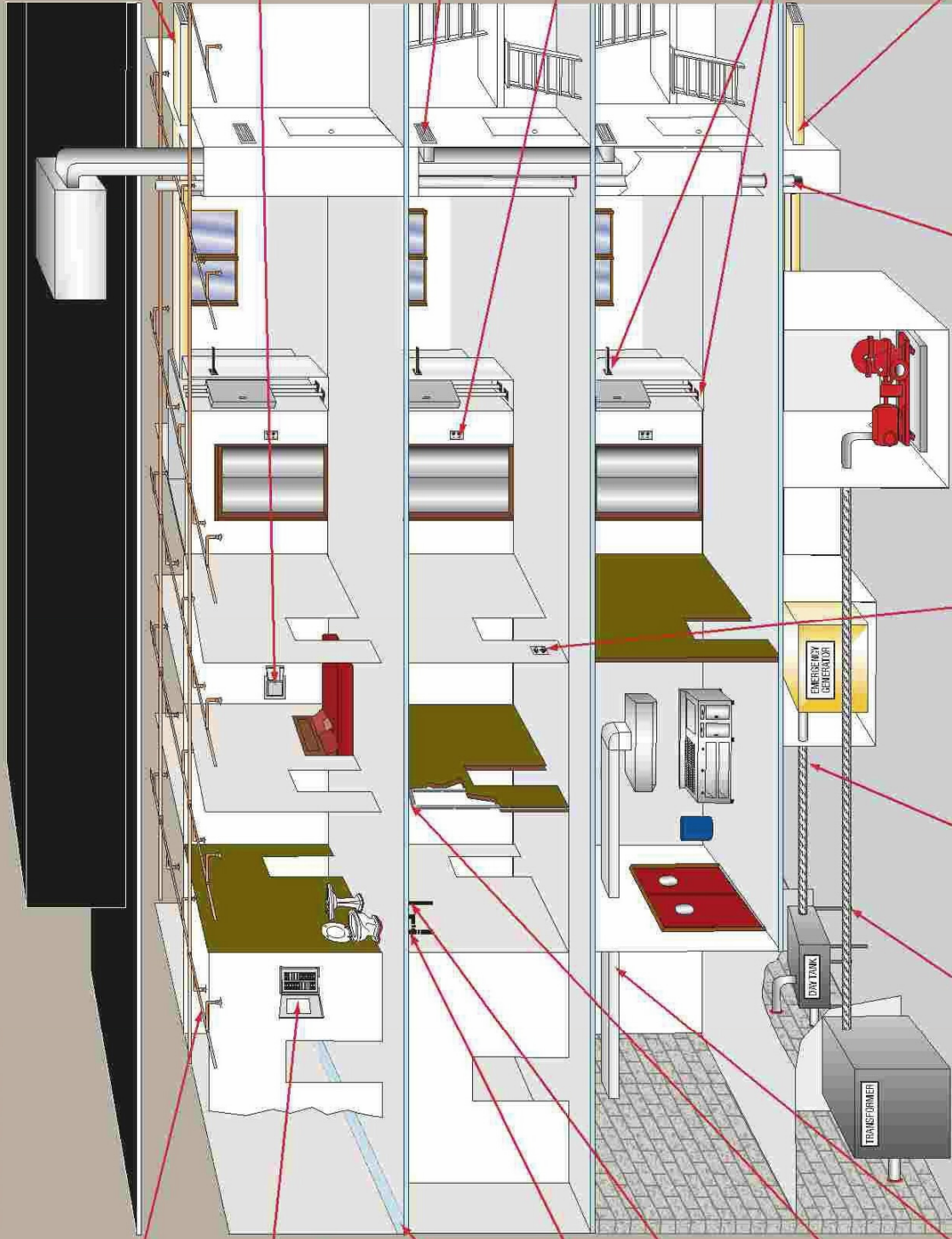
		Trained Installer	
Mike Cunningham – Construction Systems			
has successfully completed training and is hereby Certified 3M™ Trained in product application and proper installation procedures for the following firestopping systems:			
Construction Joints Duct and Plenum Wrap		Penetration Seal Telecom Woodframe Construction	
8/13/2010 Date Training Completed			
<i>Training must be renewed every three years. See reverse side for important information.</i>		<hr/> Instructor's Signature	

About Construction Systems Inc.

Construction Systems Inc. (CSI) is a commercial general trades and specialties subcontractor, and a leading facilities renovation contractor. CSI also serves as the exclusive central Ohio installation contractor for Haworth TecCrete™ raised flooring products. CSI serves central and southeastern Ohio from its headquarters in Columbus Ohio. CSI self-performs general trades work and is one of Central Ohio's largest employers of skilled craftsmen. Celebrating its 43rd year in the building industry, CSI has completed over 13,000 projects and worked in hundreds of buildings in central Ohio. For more information about any of CSI's service offerings, projects or company contacts visit www.ConSysOhio.com or call 614-252-0708.

3M Fire Protection Application Profile

Typical Commercial Building



CPVC Sprinkler Pipes
System# W-L-2299
3M™ Fire Barrier
Watertight Sealant
3000WT or IC 15WB+

Electrical Panel
System# W-L-7168
3M™ Interam™
Endothermic Mat E-5A-4



Perimeter Joint
Design No. CEJ 370 P
3M™ FireDam™
Spray 200

Bathroom Pipes
System# C-AJ-2510
3M™ Fire Barrier
Watertight Sealant
3000WT

Sink Pipe
System# C-AJ-1044
3M™ Fire Barrier
CP 25WB+

Head of Wall Joint
System# HW-D-0265
3M™ FireDam™
Spray 200

Kitchen Exhaust Duct
Design No. 3MU/FRD
120-13 (GD 556 F)
3M™ Fire Barrier
Duct Wrap 15A

Elevator Hoistway
Smoke Management
Duct -System# V-27
3M™ Fire Barrier
Duct Wrap 615

Safe Deposit Box
System# W-L-7168
3M™ Interam™
Endothermic
Mat E-5A-4



Stair Air
Pressurization Duct
System# V-27
3M™ Fire Barrier
Duct Wrap 615

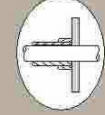
Elevator Call Box
System# W-L-7168
3M™ Interam™
Endothermic Mat
E-5A-4



Electrical Closet
Conduits
System# C-AJ-1540
3M™ Fire Barrier
Pass-Through Device



Elevator Hoistway
Smoke Management Duct
System# V-27
3M™ Fire Barrier
Duct Wrap 615



Steel Pipe-Equal F&T
System# F-A-1057
3M™ Fire Barrier Duct
Wrap 20A



Electrical Box Outlet
System# CLIV R9700
3M™ Fire Barrier
Moldable Putty Pad MPPP+

Fuel Line Protection
Design No. FPE 501
3M™ Interam™
Endothermic Mat E-5A-4

Electrical Circuit Protection
Design No. ECP 526
3M™ Interam™ Endothermic
Mat E-5A-4

Transformer
System# HW-D-0265
3M™ FireDam™
Spray 200